



# PATLITE®

## INSTRUCTION MANUAL

[Model : KG ]

Thank you for specifying **PATLITE** for your application. Please read these instructions carefully before you perform installation, maintenance and repair. Store this manual carefully for easy reference. If you have any questions about this product, please contact PATLITE Corporation.

### NOTES TO BE OBSERVED FOR SAFE OPERATION

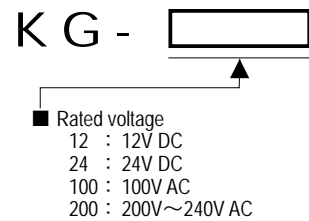
Note to be followed to prevent any damage to the user and other personnel or to assets are as follows:  
 ■ The indications for warning are divided into the following classes according to the degree of danger or damage incurred when the warning is not taken into consideration and the product is not correctly used.

- DANGER** Indicates an imminently dangerous condition: failure to follow the instructions may lead to death or serious injury.
- Warning** Indicates a potentially dangerous condition: failure to follow the instructions may lead to death or serious injury.
- Caution** Indicates a potentially dangerous condition: failure to follow the instructions may lead to slight injury or property damage.

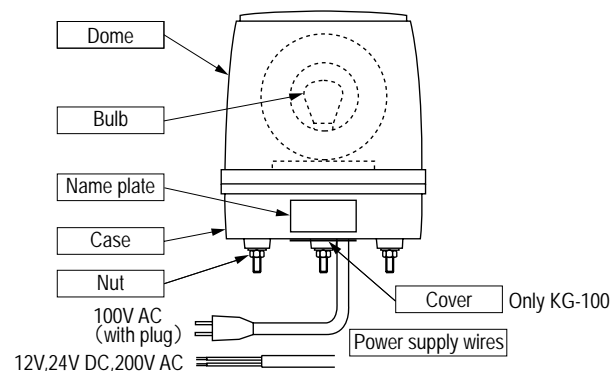
### 1. To operate this product safely, please observe the followings.

- DANGER** Do not put the flammable material, such as paper or cloth, on the rotating light while it is in operation. It may cause a fire.
- Warning**
  - Turn off the power supply before making wiring connections. Neglecting to do so may cause an electric shock.
  - Do not use this product without dome or with cracked dome. It may cause electric shock.
  - Make sure power is turned off and the temperature of electric bulb falls down for repair to avoid electric shock and burn.
  - Ask a specialist or an electric engineer about wiring or a construction. Electric shock, fire and fall may occur.
- Caution**
  - Use only specified operating voltage range. Excess voltage hastens degradation.
  - Make sure not to use any other bulbs except ones described in specifications.
  - Make sure to set fuse in a power supply side, please connect a fuse. When you use this product for security purpose, routine inspection must be done.
  - Just in case of emergency we recommend you to use this product together with other security product.

### 2. Model No. configuration



### 3. Parts name

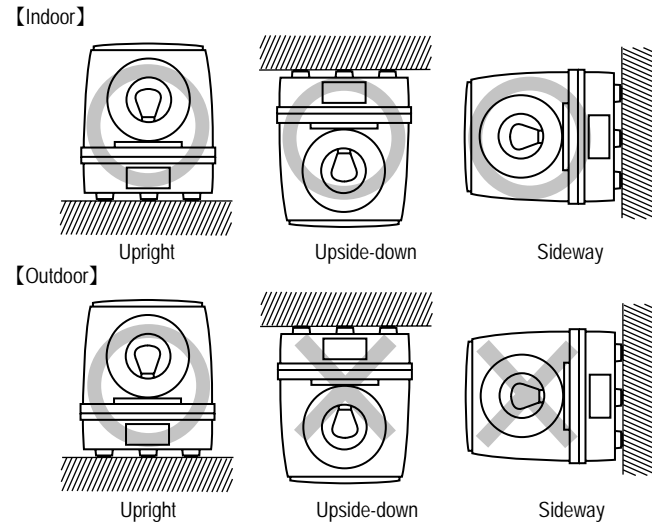


### 4. Installation(Mounting)

- Caution**
    - Ask a specialist or an electric engineer about wiring or a construction. Electric shock, fire and fall may occur.
    - To avoid lost lighting, electric shock and burnout of power source; do not install the product horizontally and upside down in the place where it get wet. If water goes into the product, it will cause short circuit.
    - When installing the unit in a high place, choose the place where a foothold can be secured for case in repairs.
    - Follow the precautions below to keep bulb's life from vibration.
      - (a) Do not install directly on vibrating or shock-producing equipment.
      - (b) Do not install on a column or a wall experiencing vibration.
- Use rigid L brackets in order to prevent swing of the light caused by wind and other vibrations.

#### Installation

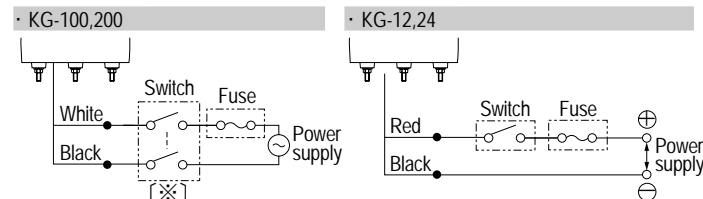
- Please process mounting hole to attachment portion.
- Please fix using attached nuts.
- Machining of mounting hole is convenient if an attached paper pat tam is used.
- The direction of the product that you can install is as follows.



### 5. Wiring procedure

- Caution**
  - Turn off the power supply before making wiring connections. Neglecting to do so may cause an electric shock.
  - Confirm the working voltage of the product.
  - Wiring should be careful enough there to be for no mistake. If wiring is mistaken, an internal circuit will be damaged and it will become the cause of a fire.
  - Follow the wiring example about wiring. Be sure to use crimp type terminal connections.
  - Make sure to set fuse in a power supply side, please connect a fuse. When you use this product for security purpose, routine inspection must be done.
  - Choose the switches and relays in consideration of starting current. The starting current must be with in 10 times as high as high as the rated current.
  - Do not pull lead wire and push it in case when wiring.

#### [Wiring example]



[※] The model of the specification of 100V AC has the power cord with plug.

### 6. Maintenance

- Caution**
  - Do not use any bulb other than specified on 8. specification and name plate.
  - Make sure power is turned off and the temperature of electric bulb falls down for repair to avoid electric shock and burn.
  - To clean dome and body, wipe with water or glass cleaner soaked soft cloth. Do not use thinner, benzine, gasoline or oil as these cause color change or deform the surface.
  - Do not lubricate oil to the motor and rotor, it makes the motor stop.
  - Do not use the hands to rotate the reflector.

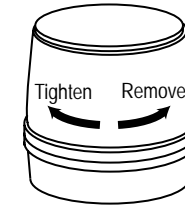
- Check tightening torque of the screws for secure mounting.
- Change the dome if it is fogged, the fogged dome deteriorates lighting performance.

### ■ Maintenance procedure

#### 1. Change Dome

Please follow procedure mentioned below to change to dome.

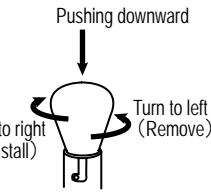
- (1) Make sure power is turned off when changing dome.
- (2) Remove the dome turning it to the left.
- (3) New dome is attached, it turns right ward and it attached in a case.



#### 2. Change Bulb

Please follow procedure mentioned below to change to bulb.

- (1) Make sure power is turned off when changing bulb.
- (2) Remove the dome turning it to the left. (Refer to the "Change dome")
- (3) Press the bulb and turn it to the left to detach from the socket.
- (4) Fix new bulb into the socket by pressing right ward. (Install)
- (5) The dome is attached. (Refer to the "Change dome")



※ Make sure not to use any other bulbs except ones described in name plate.

#### ■ Replacement parts

- The replacement parts prepared. Please ask your local distributor for availability.
- Dome · Bulb · Motor · Rotor rubber
- ※If you have question please feel to contact us about other parts.

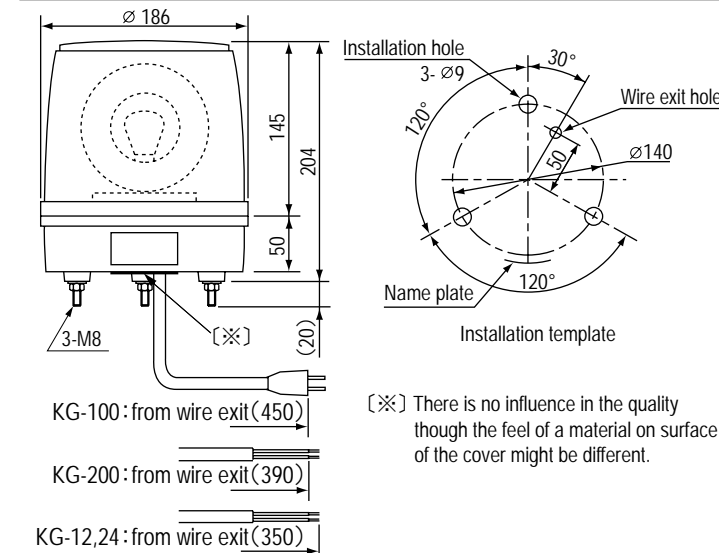
### 7. Before requesting service

Please check the list shown below before requesting repairs. If the product still not work please contact us for repairs. Please feel free to contact our sales office with any questions concerning the product. For inquiry, you are required to identify the number indicated at the name plate of the product.

Problems	Where to check	What to do
The reflector would not rotate and the lamp stays turned off.	Is the power on ?	Check the power wiring, plug connection and fuse. If a switch is installed, check to see that it is turned on.
The reflector rotates but the lamp is off.	Is the light bulb burned out ?	If it is, replace it with a new one.
The lamp is turned on but the reflector stays stopped.	Is the motor stopped ? Is the motor lubricated ?	The motor is broken or has reached the end of its life. Request a repair.

### 8. Specifications

#### 1. Dimensions



### 2. Specifications

Model	Rated voltage	Current	Bulb	Mass	Wire type/die
KG - 100	100V AC (50/60Hz)	0.32A	120V40W	0.9kg	VCT, 0.75mm <sup>2</sup>
KG - 200	200~240V AC (50/60Hz)	0.13A	240V30W		
KG - 12	12V DC	2.7A	12V35W	0.7kg	AV, 1.25mm <sup>2</sup>
KG - 24	24V DC	1.2A	24V35W		

- ※ Flashing cycle : 200Flashes per minute
- ※ Protection rate : IP23
- ※ Bulb type : Glass RP35/Base BA15D (KG-100,200)/BA15S (KG-12,24)

#### Caution

- We are not in a position to be responsible for damage and trouble caused by handling against caution and warning described in this instruction manual.
- Specifications may change without notice due to continual product improvement.

## PATLITE Corporation

International Division Sales & Marketing Department  
 8-8 Matsuya-machi, Chuo-ku, Osaka 542-0067 JAPAN  
**PATLITE (U.S.A.) Corporation**  
 20130 S. Western Avenue, Torrance, CA 90501 U.S.A.  
**PATLITE (SINGAPORE) PTE LTD**  
 No.2 Leng Kee Road, #05-01 Thye Hong Centre, Singapore 159086  
**PATLITE (CHINA) Corporation**  
 Room 512, Jufeng Business Building, No.697-3 Lingshi Road, Shanghai 200072, China  
**PATLITE Europe GmbH**  
 Am Soeldnermoos 8, D-85399 Hallbergmoos, Germany

TEL. +81-6-6763-8220  
 FAX. +81-6-6763-8221  
 TEL. +1-310-328-3222  
 FAX. +1-310-328-2676  
 TEL. +65-6226-1111  
 FAX. +65-6324-1411  
 TEL. +86-21-6630-8969  
 FAX. +86-21-6630-8938  
 TEL. +49-811-99819770-0  
 FAX. +49-811-99819770-9

<http://www.patlite.com/>